



**American
Made
Quality**



**No Job
Too Big!**



**No Job
Too Small!**



**ISO
9001:2008
Certified**



**2620 AUBURN ST.
ROCKFORD, IL 61101
PH: 815-965-0882
FAX: 815-965-1049
WWW.A-AMERICANCOMPANIES.COM
SALES@A-AMERICACOMPANIES.COM**

CNC TURNING CENTERS

(1) 2008 TAKISAWA EX-110 12" CHUCK



Capacity

Swing over bed, (INCH) 19.5
Swing over cross slide, (INCH) 15.75
Distance between center, (INCH) 33.25
Chuck size, (INCH) 10/12
Maximum turning diameter, (INCH) 15.75
Maximum turning length, (INCH) 28
Bar capacity, (INCH) 2.88/3

Travel

X-axis stroke, (INCH) 8.63
Z-axis stroke, (INCH) 28

Spindle

Spindle speed, (RPM) 50/3500
Spindle nose A2-8
Spindle thru hole diameter, (INCH) 3.38
Spindle bearing diameter, (INCH) 4.75

Turret

Type of turret Drum
Number of Tools 10 / 12
Height of square tool, (INCH) 1
Diameter of boring bar holder, (INCH) 2
Tool index time, (SEC) 0.6

Tailstock

Tailstock stroke 22.88
Tailstock's shaft stroke 5.88
Tailstock taper MT5
Tailstock's shaft hole diameter 4.25

Motor

Spindle motor, (HP) 20 / 25
Z-axis servo motor, (HP) 3.35
X-axis servo motor, (HP) 1.6

Power

Electric requirement, (KVA) 35

Tank

Coolant Tank, (GAL) 61

Machine Size

Machine length, (INCH) 110
Machine width, (INCH) 67
Machine height, (INCH) 71
Machine weight, (LBS) 11,023

Maintaining the Latest in Machine Technology Keeps Us Ahead of the Curve!

- Designed for the 21st century using the latest technology.
- Perfectly balanced integration of controller, servos and mechanics.
- The best solution for small batch production of complex parts.
- Advanced safety features dramatically reduce down time due to operator errors.
- Latest generation of super rigid guides give longer sustained accuracy and greater metal removal.
- Fast rapid traverse reduces non cutting time and increases productivity.
- 10 or 12 station turret lets us handle the most complex component and leave tools permanently set up.
- Servo controlled high speed indexing reduces idle time and increases productivity.
- Powerful, accurate and high speed turret provides maximum rigidity and cuts with ease.
- Rigid bearing support allows stable powerful cutting.
- Precision assembly conditions ensure high component accuracy.
- One piece, 30 degree slant bed design means easy chip flow and full heavy duty cutting.
- Thermally balanced bed design allows powerful and stable cutting.
- High speed processing and look-ahead features allow fast and accurate cutting feeds.

CNC TURNING CENTERS cont.

(1) 2005 TAKISAWA EX-110 12" CHUCK W/ IEMCA BAR FEEDER



CNC Control: Seicos J Multi

Swing Over Bed: 17.7"
Chuck Outer Diameter: 8.26"
Max. Machining Diameter: 10"
Max. Machining Length: 15"
Bar Capacity: 2"

Travel:

X-Axis: 9"
Z-Axis: 15.75"
Spindle Speed: 30 - 5,000 RPM
Spindle Speed Range: INFINITE
Spindle Nose (Type/No): A2/6
Diameter of Spindle Through Hole: 2.3"
Spindle Bearing Inside Diameter: 3.5"

Type of Turret: 10 KV 40

of Turret Tool Positions: 10
Shank Height of Square Bite: 1"
Shank Diameter of Boring Bar: 1.25"
Rapid Traverse (X/Z Axis): 1,181 IPM
Type of Tailstock Spindle Taper Hole: MT-5

Method of Tailstock Travel: POWER OPERATION

Stroke of Tailstock: 11.8"
Motor: 20HP

1997 HITACHI SEIKI HT-20J 8" CHUCK



MANUAL LATHES

(1) CLAUSING COLCHESTER #21 36" SWING x 100" CENTERS

(1) MONARCH ENGINE LATHE 16" SWING x 30" CENTERS



(1) LOGAN CHUCKER W/QUICK CHANGE COLLETS

VERTICAL MILLING MACHINES

(1) 1999 FADAL 5020 CNC

(1) 1998 FADAL 5020 CNC W/4th AXIS

(1) 1997 FADAL 6030 CNC W/4th AXIS

(1) 1995 FADAL VMC 15 XT



NEW IN 2011

**(1) YCM XV2010A
CNC - 4020**

HORIZONTAL MILLING MACHINES

- (2) 2006 TOYODA FA450-III TWIN PALLET
- (1) 2202 COMPUMILL TWIN PALLET
- (1) 4B 60 DEVLIG JIGMILL
- (1) 3B 72 DEVLIG JIGMILL



Pallets:

Pallet size	17.7 x 17.7 in (450 x 450 mm)
Pallet height from floor	43.3 in (1,100 mm)
Rotary table index increments	1 deg (0.001 NC opt)
Indexing time, 90 degrees	2 sec
Indexing time, 180 degrees	2.4 sec
Pallet changing time	5 sec (5 sec NC)
Max load on pallet	880 lb (400 kg)

Control:

GE Fanuc 16i MB / Fanuc 31i

Tool Magazine:

Standard storage capacity	40 (opt 26, 60, 120, 200; 134 - 326)
Tool selection	Fixed pocket, random access
Maximum tool weight	17.6 lb (8 kg)
Maximum tool size (diameter x length)	ø2.95 x 13.78 in (ø75 x 350 mm)
Tool change time, tool-to-tool	1.3 sec
Tool change time, chip-to-chip	2.5 sec
Type of tool	CAT #40 V-Flange

Feed:

Rapid traverse (X, Y and Z)	1,969 ipm (50 m/min)
Cutting feedrate	1,969 ipm (50 m/min)
Acceleration	0.53 G avg / 0.7 G max

Accuracy:

Linear positioning accuracy	± 0.00012 in (0.003 mm) full stroke
Linear repeatability	± 0.00006 in (0.0015 mm)
Rotary table index accuracy	± 3 arc sec

Machine Size:

Machine height	113 in (2,860 mm)
Floorspace	196 x 95 in (4,985 x 2,415 mm)

Work Area:

Axis travel X (column)	23.6 in (600 mm)
Axis travel Y (spindle head)	23.6 in (600 mm)
Axis travel Z (table)	23.6 in (600 mm)
Spindle nose to rotary table center	4.9 - 28.5 in (125 - 725 mm)
Spindle nose to top face of pallet	1.97 - 25.6 in (50 - 650 mm)
Workpiece swing	ø24.8 x 39.0 in (ø630 x 990 mm)

Spindle:

Speed (infinitely variable)	50 - 15,000 rpm (opt 8,000 or 20,000 rpm)
Drive motor power	AC 30 hp (22 kw) for 15 min. AC 25 hp (18.5 kw) continuous
Drive motor power (optional 8,000 rpm)	AC 24 hp (18 kw) interim AC 20 hp (15 kw) continuous
Drive motor power (optional 20,000 rpm HSK-A63)	AC 30 hp (22 kw) interim AC 25 hp (18.5 kw) continuous
Spindle nose taper	ISO R297 #40
Spindle diameter (front bearing ID)	ø3.15 in (ø80 mm)
Coolant through the spindle	Standard



FA450-III

Speed and rigidity in a streamlined enclosure. Center trough design for fast chip removal

VERTICAL MILLS



- (2) SPORT PROTO TRAC 10" x 50"
- (2) LAGUN FTV 2 10" x 50"
- (1) LAGUN FTV 2 's 9" X 50"
- (1) CLAUSING 10" x 50"

MISCELLANEOUS EQUIPMENT



- (1) H-12 HYD-MECH SAW
- (1) HAND SAW 14"
- (1) WALKER TURNER DRILL PRESS
- (1) SUPERIOR HONE
- (4) BARBER COLEMAN 16-16 HOB
- (2) DAVIS KEYSEATER MODEL 15
- (1) ELECTRO ARC TAP BURNER
- (2) SURGACE GRINDERS

QUALITY ASSURANCE

The Faro Gage replaces traditional measurement tools and increases measurement flexibility and accuracy!

Up to .0002" (.005mm) accuracy
Portable and easier-to-use than a fixed CMM

Mount and measure parts in process
Generate GD&T & SPC reports



ETCHING AND MARKING EQUIPMENT

LM-4400 Etching Machine



Perfect for:
Inscribing Part #s
Inscribing Lot #s
Serialized Inventory

ISO 9001:2008 CERTIFICATION

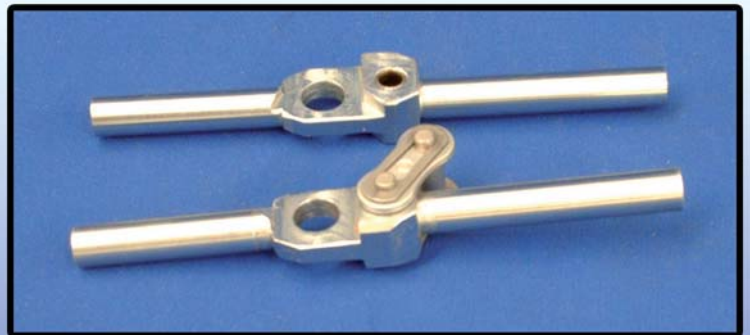


**We are proud of our recent
ISO 9001:2008 Certification**

**Effective Date July 23, 2010
Certificate No. C2010-01946**

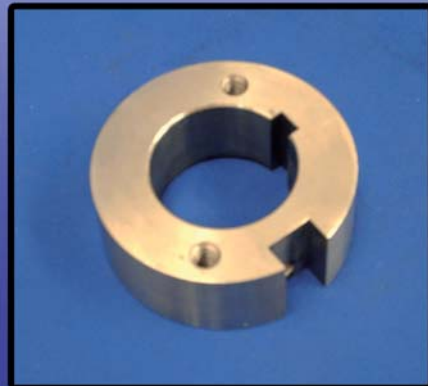
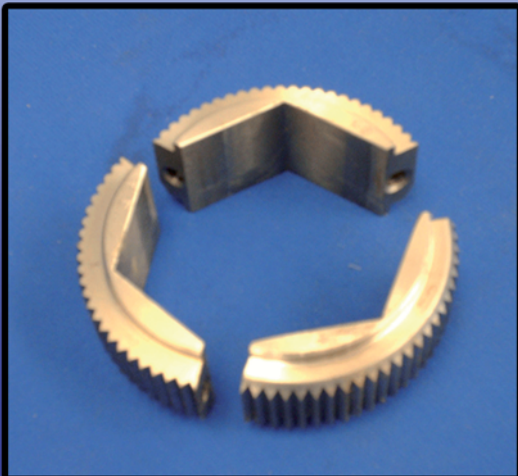
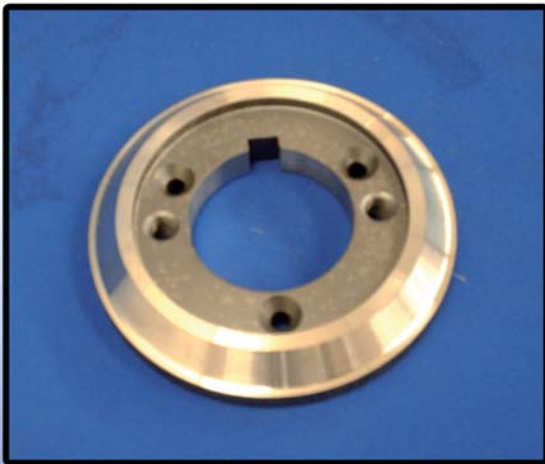
OUR PORTFOLIO

Printing Press Industry



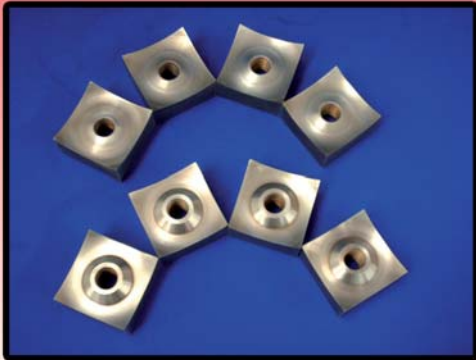
OUR PORTFOLIO

Printing Press Industry
Cont.



OUR PORTFOLIO

Tire Shredding Equipment



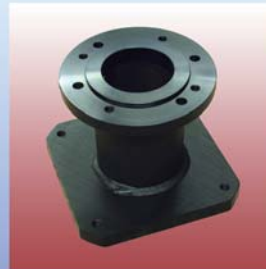
Foundry Industry



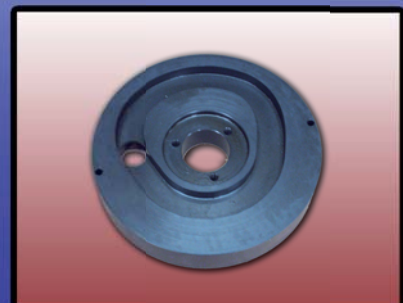
Packaging Equipment



Custom Parts

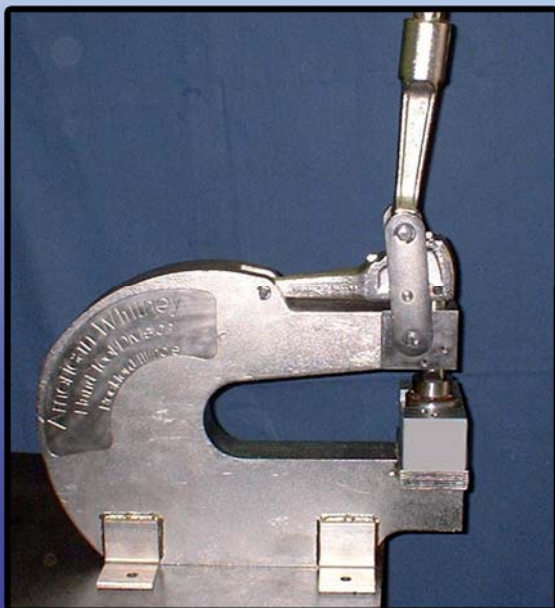
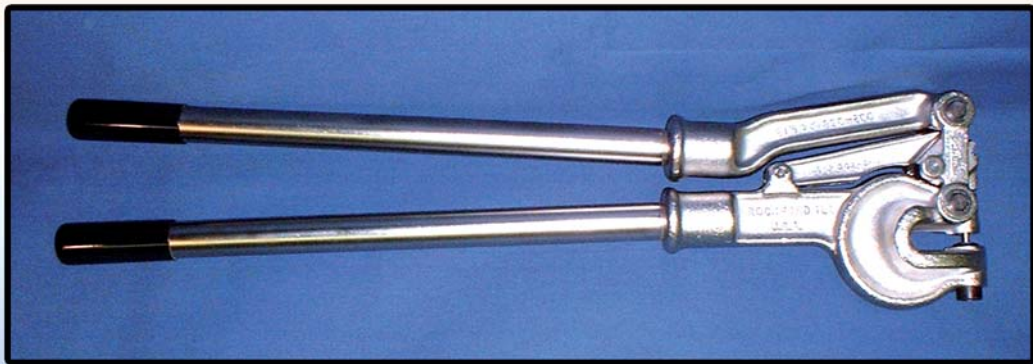


Specialized in Custom Made Cams



OUR PORTFOLIO

Hand Tools





American

MACHINE & ASSEMBLY DIVISION



2620 AUBURN ST.
ROCKFORD, ILLINOIS 61101

